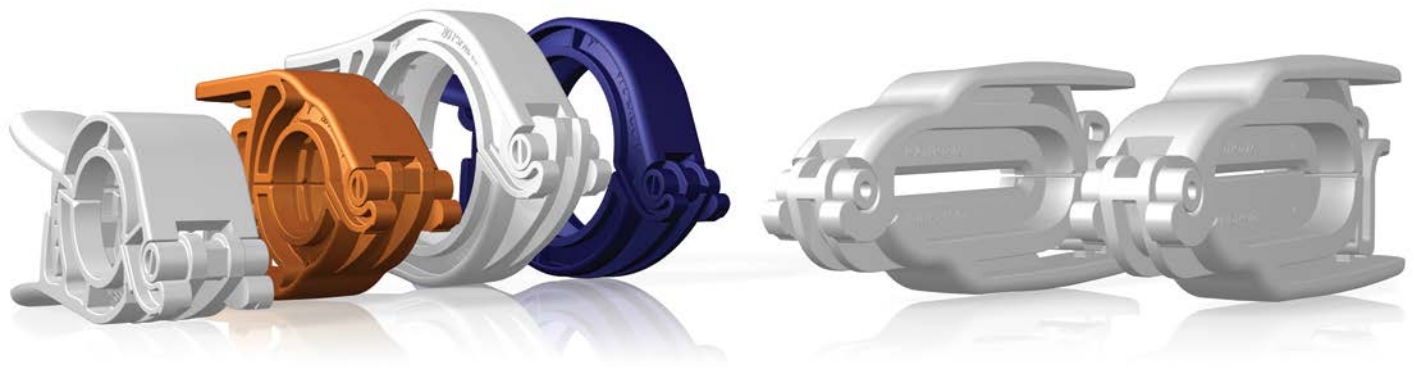


State-of-the-Art Design Allowing for Easy Operation

The biopharmaceutical industry has made a strong move towards single-use technology, so Nordson MEDICAL has developed ground-breaking clamp designs that simplify the assembly process. Effortlessly and securely attach sanitary fittings to bag ports and filters with PharmaLok™ Easy-Open Clamps, and close off flow with PharmaLok™ Tube Clamps.



Single-Use Clamps & Easy-Open Clamps Features & Benefits

- ASME BPE 2016 DT-7-1 compliant & DIN compliant
- Easy to use, one-handed closure - no tools needed
- Repeatability with constantly equal pressure on the gasket
- Tamper evident & zip tie compatible
- 360° compression
- Connects both plastic and stainless steel fittings
- SIP/CIP compatible

Specifications

- **Materials:**
Zytel® FGFE5171 glass-filled nylon certified to USP Class VI & ISO 10993 and available in white, blue, or orange
- **Temperature & Sterilization Specifications:**
Normal operating temperature -94° F (-70° C) to 140° F (60° C)
Cryogenic freezing to -112° F (-80° C)
Autoclavable up to 273° F (134° C) for a maximum of 30 min.
Gamma radiation up to 50 kGy
- **Maximum Pressure:**
80 psi (conforms to ASME BPE-2014 PM-4.2.2)
- **Sizes:**
.5" to .75" and 1" to 1.5"

Tube Clamps Features & Benefits

- Designed for use with silicone & TPE tubing
- Easy to use, one-handed closure - no tools needed
- Tamper evident & zip tie compatible
- Thin wall tube clamp works with smaller ID tubing sizes

Specifications

- **Materials:**
Zytel® FGFE5171 glass-filled nylon certified to USP Class VI & ISO 10993 and available in white
- **Temperature & Sterilization Specifications:**
Normal operating temperature -94° F (-70° C) to 140° F (60° C)
Cryogenic freezing to -112° F (-80° C)
Autoclavable up to 273° F (134° C) for a maximum of 30 min.
Gamma radiation up to 50 kGy
- **Maximum Pressure:**
Up to 150 psi
- **Sizes:**
.25" to .625" and .5" to 1.25" tubing ID

Easy-Open Clamps



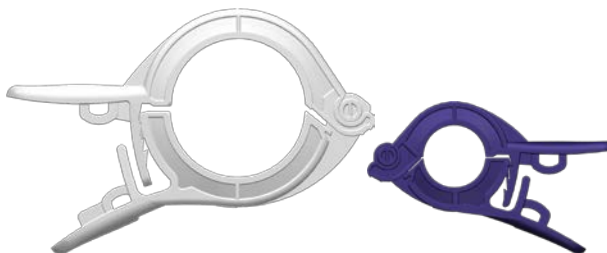
CPAX150 (-U71, -U75, -U706)

Tri-Clover Easy-Open Clamp for Maxi Flange, 1" to 1.5", Glass-Reinforced White, Blue, or Orange Nylon

CPAN75 (-U71, -U75, -U706)

Tri-Clover Easy-Open Clamp for Mini Flange, .5" to .75", Glass-Reinforced White, Blue, or Orange Nylon

Single-Use Clamps



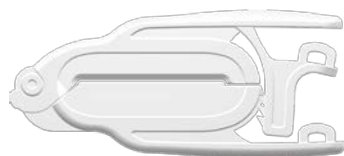
CPX150 (-U71, -U75)

Single-Use Series Clamp, TC Version 1" to 1.5", Glass-Reinforced White or Blue Nylon

CPN75 (-U71, -U75)

Single-Use Series Clamp, TC Version .5" to .75", Glass-Reinforced White or Blue Nylon

Tube Clamps



CPT90 (-U71)

Tube Clamp, .25" to .625" Tube ID, Glass-Reinforced White Nylon

Silicone and TPE Tubing Compatibility

Tubing ID	1/16"	1/16"	1/8"	3/16"	3/16"	1/4"	1/4"	5/16"	5/16"	3/8"	3/8"	7/16"	1/2"	1/2"	5/8"	5/8"
Tubing OD	1/8"	3/16"	1/4"	5/32"	3/8"	3/8"	7/16"	7/16"	1/2"	1/2"	9/16"	5/8"	5/8"	11/16"	3/4"	13/16"
Wall	1/32"	1/16"	1/16"	1/16"	3/32"	1/16"	3/32"	1/6"	3/32"	1/16"	3/32"	3/32"	1/16"	3/32"	1/16"	3/32"



CPT100 (-U71)

Tube Clamp, .5" to 1.25" Tube ID, Glass-Reinforced White Nylon

Silicone and TPE Tubing Compatibility

Tubing ID	Tubing OD						
	5/8"	3/4"	7/8"	1"	1-1/8"	1-1/4"	1-1/2"
1/2"	No	Yes	—	—	—	—	—
5/8"	—	No	Yes	Yes	—	—	—
3/4"	—	—	—	Yes	Yes	—	—
1"	—	—	—	—	—	Yes	Yes

— Tubing size not available

Reinforced Silicone and TPE Tubing Compatibility

Tubing ID	Tubing OD				
	7/8"	1"	1-1/8"	1-1/4"	1-3/8"
1/2"	Yes	—	—	—	—
5/8"	—	Yes	—	—	—
3/4"	—	—	Yes	—	—
7/8"	—	—	—	Yes	—
1"	—	—	—	—	Yes

MAR-PharmaLok-DS-02